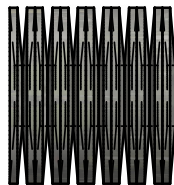
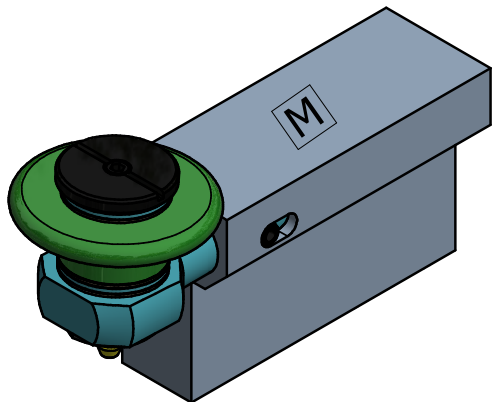


590010080477M

PART NO.

PART NO.

590010080477M

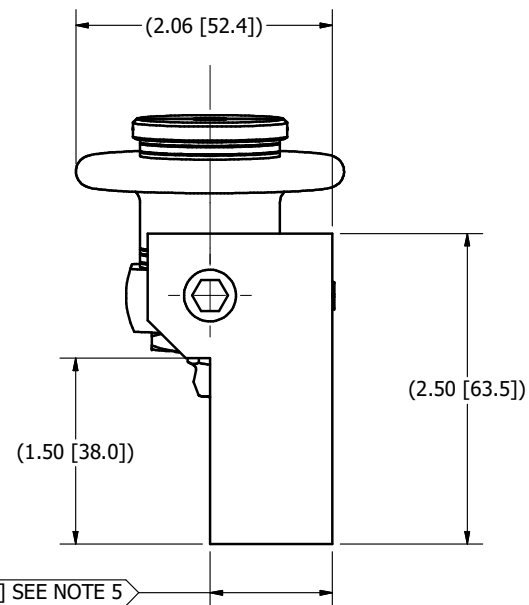
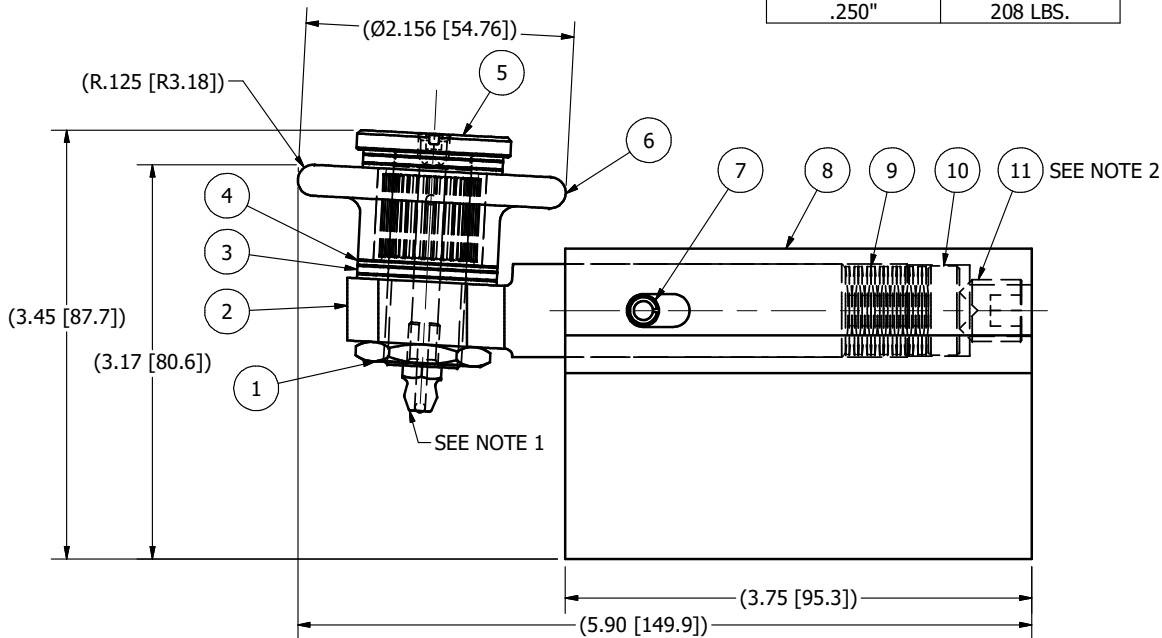


BELLEVILLE SPRING DETAIL
SEE NOTE 3

SPRING FORCE INFO - ITEM 9	
DEFLECTION	LOAD
.064"	65 LBS.
.127"	119 LBS.
.191"	165 LBS.
.250"	208 LBS.

PARTS LIST			
ITEM	QTY	PART NUMBER	DESCRIPTION
1	1	PC76-0050818	LOCK NUT
2	1	S2075D3	SHANK
3	2	P1067-1	THRUST BEARING
4	4	P1067B	THRUST RACE
5	1	S2075D10	AXLE
6	1	590070080282	CARBIDE ROLL
7	1	P8386-24	SPRING PIN, 1/4 X 1-1/2
8	1	S2075D13M	TOOL HOLDER, METRIC
9	13	579-44	BELLEVILLE SPRING
10	1	ED18	SLUG
11	1	128B	CUP POINT SET SCREW, 1/2-13 X 1/2
12	1	S2300C	CASE (NOT SHOWN)

590010080477M (DATED 6-25-08)



NOTES:

- ZERK FITTING AND SET SCREW ARE INCLUDED WITH AXLE AND CAN BE SWITCHED IF NECESSARY.
- ASSEMBLE TOOL WITH NO PRELOAD ON THE SPRING STACK. TIGHTEN THE SET SCREW ONLY TO REMOVE END PLAY.
- BELLEVILLE SPRINGS TO BE STACKED IN SERIES.
- LEFT HAND TOOL.
- INSPECT THIS DIMENSION PRIOR TO SHIPMENT.

M MARKING METHOD		ETCH		TOLERANCES UNLESS OTHERWISE SPECIFIED		MATERIAL SPEC MATERIAL REQUIRED				THIS DRAWING CONTAINS INFORMATION OF A PROPRIETARY NATURE AND IS ISSUED FOR REFERENCE USE ONLY AND MAY NOT BE COPIED, REPRODUCED OR USED TO MANUFACTURE ANYTHING SHOWN HEREON WITHOUT WRITTEN PERMISSION.	
590010080477M ELLIOTT TOOL TECHNOLOGIES MADE IN USA				.XX = ±.02 .XXX = ±.005 ANGLES = ±.5°		-- SEE PARTS LIST					
				BREAK SHARP CORNERS .030" MAX.		HARDNESS		PROCESS SPEC		DESCRIPTION	
				MACHINED SURFACES - 125 MICRO. MAX.		NONE		NONE		CARBIDE ROLL BURNISHING TOOL	
				DIMENSIONS ENCLOSED IN PARENTHESIS ARE FOR REFERENCE ONLY		FINISH				ENG DRAW DATE TOOL NO. PROJECT NO.	
				DIAMETERS ON COMMON CENTERS TO BE CONCENTRIC WITHIN .003" T.I.R.		NONE				SGP 5/20/2016 --	
				DO NOT SCALE DRAWING		WEIGHT (LBS.)		VOLUME (CU. IN.)		CHECK CHECK DATE PART NO.	
						3.848		43.710		CJF 5/20/2016 590010080477M	