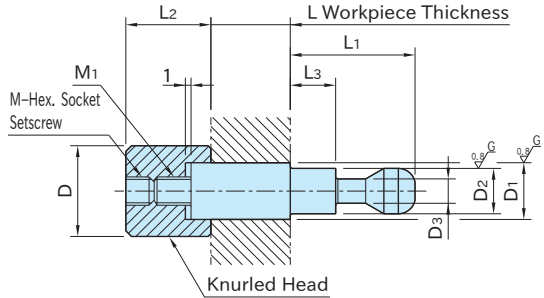
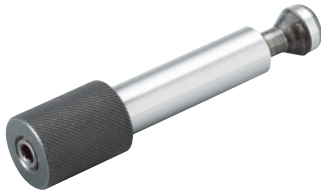


QLPDH-X

CLAMPING PINS (Heavy)

On Request



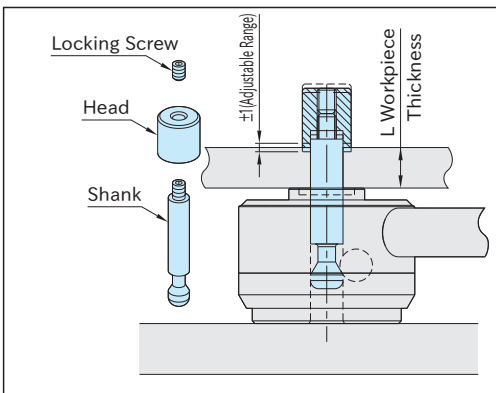
L dimension is adjustable by ± 1 mm to fit actual workpiece thickness.

Shank	Head
SCM435 steel Induction hardened (taper seat) Precision ground	S45C steel Quenched and tempered Black oxide finish

Part Number	D ₂ (f7)	D ₁ (f7)	L* (By 0.1mm)	D	L ₂	L ₁	L ₃	D ₃	M	M ₁	Weight (g)	Pull Clamps
QLPDH400-12-(L Dim. In mm)	12	12	0 < L ≤ 100	18	23	38	21.5	6.5	M 8×1.25-8L	M 8×1.25	min. 70~max.160	QLPDH400R
QLPDH400-16-(L Dim. In mm)				24	29	48	28	9.5	M 10×1.5-10L	M 10×1.5	min.175~max.265	
QLPDH500-16-(L Dim. In mm)	16	16	0 < L ≤ 120	24	29	48	28	9.5	M 10×1.5-10L	M 10×1.5	min.160~max.350	QLPDH500R
QLPDH500-20-(L Dim. In mm)				30	35	54	36	12.5	M 12×1.75-12L	M 12×1.75	min.325~max.515	

*) For ordering, specify workpiece thickness.

How To Use



Ordering Example

QLPDH400-12-20.5

Shank Size L Dim.

※ QLPD400-12 for 20.5mm thickness workpiece.

Note

The length of L dimension should be decided depending on the workpiece thickness.