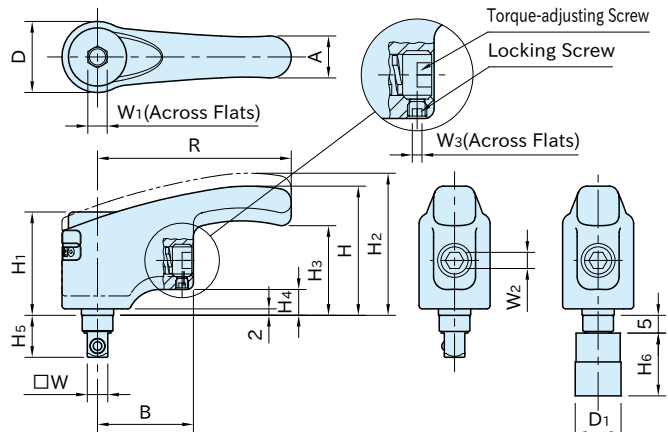


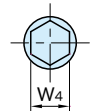
# CP-TCW

# ADJUSTABLE-TORQUEWRENCHES



Without Socket

With Socket



Socket Dimension

Type	Handle	Ratchet	Adapter	Socket
<b>CP-TCW</b>	SCM440 steel Quenched & tempered	SCM415 steel Carburized-hardened	SCM435 steel Quenched & tempered	—
<b>CP-TCW-S</b>	Painted Orange	Black oxide finished	Black oxide finished	Cr-V chrome-vanadium steel Chrome plated

Size	W	R	H	D	H <sub>1</sub>	H <sub>2</sub>	H <sub>3</sub>	H <sub>4</sub>	H <sub>5</sub>	A	B	W <sub>1</sub>	W <sub>2</sub>	W <sub>3</sub>	
<b>CP-TCW</b>	6.3	60	40	22	32	44	27.5	8	13	13	30	6	5	2	
															75
<b>CP-TCW-S</b>	10	9.5	90	57	32	45	62.5	39.5	10.5	16.5	18	39	10	6	2.5

Size	Torque Range (N·m)	
<b>CP-TCW</b>	6	1~3.5
<b>CP-TCW-S</b>	8	2~5.4
	10	3~8

## ■ Without Socket

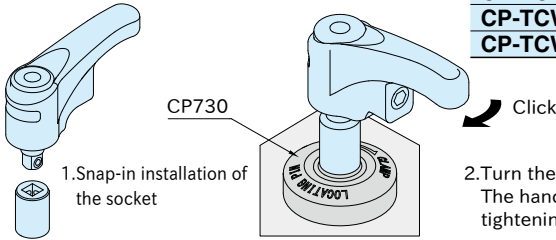
Part Number	Weight (g)
<b>CP-TCW 6</b>	166
<b>CP-TCW 8</b>	284
<b>CP-TCW10</b>	467

## ■ With Socket

Part Number	W <sub>4</sub>	D <sub>1</sub>	H <sub>6</sub>	Weight (g)
<b>CP-TCW 6-S</b>	10	13.8	25	183
<b>CP-TCW 8-S</b>	13	17.8		314
<b>CP-TCW10-S</b>	17	23.8	30	529

## How To Use

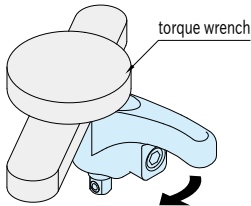
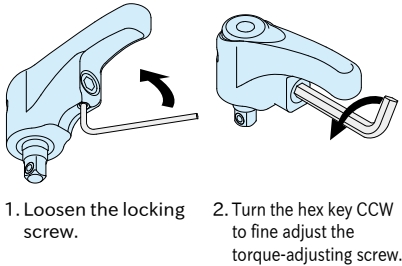
Can be used as a tightening tool for **CP730** ONE-TOUCH FLEX LOCATOR CLAMPERS (Hexagon Head).



- Turn the handle to clamp.  
The handle clicks to indicate completed tightening at desired torque.

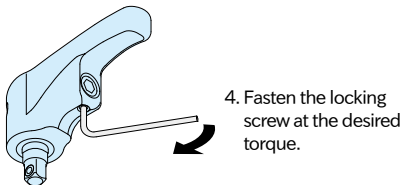
## How To Set Torque

The preset torque is roughly set to its maximum tightening torque.



- Measure the torque with a torque wrench.

- Connect a torque wrench on the Adjustable-Torque Wrench.
- Turn the handle in the tightening direction and fine adjust the depth of torque-adjusting screw to reach to the handle clicking position at desired torque.



## Reference

See **ATCL** ADJUSTABLE-TORQUE HANDLES page for further information.

## Related Product

**CP730** ONE-TOUCH FLEX LOCATOR CLAMPERS (Hexagon Head)

Part Number

ONE-TOUCH FLEX  
LOCATOR CLAMPERS

**CP-TCW 6-S**

CP730-0939LH

CP730-0939SH

**CP-TCW 8-S**

CP730-1246LH

CP730-1246SH

**CP-TCW 10-S**

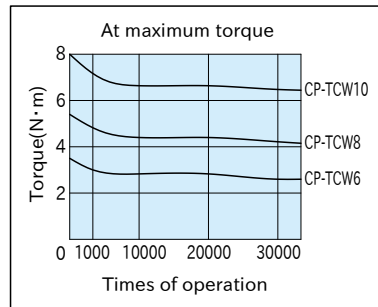
CP730-1656LH

CP730-1656SH

## Technical Information

- For initial several thousand operations, the tightening torque will decrease. (See the graph below)  
Measure the torque regularly, and fine adjust the depth of torque-adjusting screw as needed.
- The tightening torque can vary. (Max.  $\pm 15\%$ )  
Not recommended for precise torque management.

Torque Performance Graph



## Note

- Do not overtighten or overloosen the torque-adjusting screw.

## Reference Torque Adjusting Range

	Size	Rotation
Minimum torque position tightening end with roughly detectable touch	<b>CP-TCW</b> 6	3/4
	<b>CP-TCW-S</b> 8	1
	10	3/4

- To reach approx. the min torque, loosen the torque adjusting screw to the same end surface level of the body, then tighten it until you feel light touch of stop. (Ensure that the torque adjusting screw does not protrude from the body when loosening it.)
- To reach approx. the max torque, rotate the torque adjusting screw depending on the above table from the approx. min torque as instructed previously.